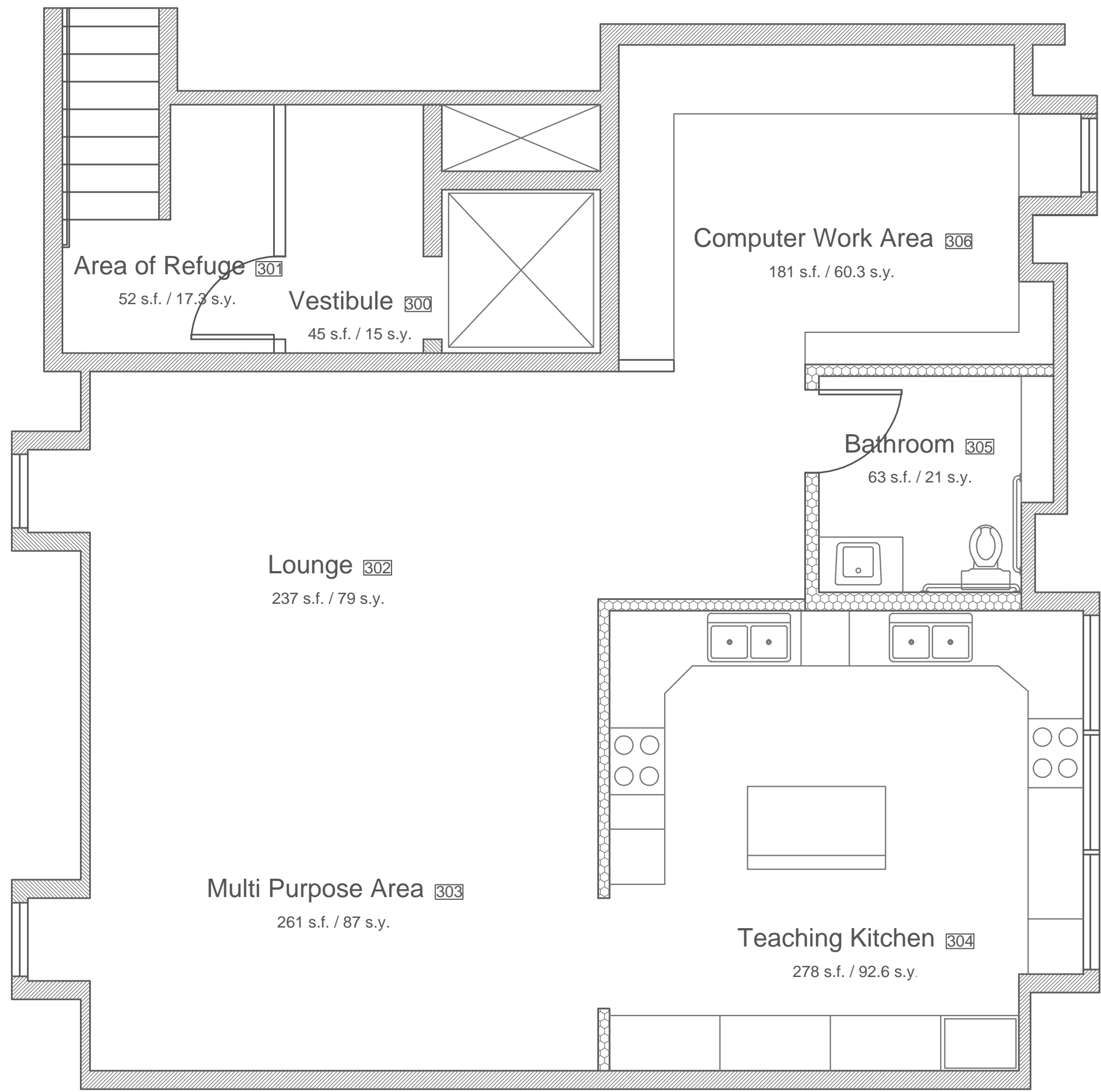


The point of this practicum is to understand and utilize knowledge of space planning and codes. The Eastern Academy is a building that will include a bookstore, pottery studio on the first floor. The second floor will be a living quarter for four handicapped students and an RA. The third floor will comprise of a kitchen, lounge, and computer lab. The plan must comply with the codes as well as follow the adjacency guidelines specified in the practicum.

123 Main St.
Anywhere, LA 70879



1 Level 3
Scale: 1/4" = 1'-0" N

